

Completed Projects

KCI New Terminal 7D Earthwork
& Parking Lots
KCI Runway 1L-19R (Phase 2)
River Bluff Bike Trail - St. Joseph
North Brighton 58th to Pleasant
KC Streets North
KC Streets South
Loves Truck Stop Cameron, MO
Route 152 Platte County
Route 635 Platte County
Route I-49 Cass County
Route 69 Clay County
Route 58 Cass County
Route 1 Cass County
KCI Overhaul Base Phase II

Current Projects

KCI New Terminal 7A Concrete
New Century Air Center Tarmac
Route 92 Clay County
Route 435 Platte County
I-35 Interchange Clay County
Runway 3-21 Wheeler Airport
Various Routes - Ray County
Route V Jackson County
Route 24 Jackson County
Route 291 & Route 7 Jackson County
Taxiway Lima - Wheeler Airport

Recently Awarded Contracts

Rosecrans Memorial Airport
Route 33 Clinton & Dekalb Counties
Terminal South Apron Rehab
Route 210 Clay County
Route 45 Highway Platte County
Route 435 South Clay County
Route 435 North Clay County



4614 South 40th St.
St. Joseph, MO 64503
Ideker, Inc.




Ideker INK

Eleventh Edition, Winter 2023

www.ideker.net



ACHIEVING THE UNTHINKABLE

Concrete crew paves over 5,000
cubic yards in one day

Concrete team sets new paving record at KCI

Phase two of KCI runway project sets up crew to pave 5,020 cubic yards in just one day!

Producing and placing 5,000 cubic yards in one day seemed impossible until one day it didn't...

Concrete Paving Superintendent Brandon Kendall and his close-knit team are always up for a challenge. This time they challenged themselves to pave over 5,000 cubic yards in one day. To put this into perspective, on a very good day, the crew will pave around 3,000 cubic yards of concrete. In relation, the average household driveway is approximately 20 cubic yards of concrete. This incredible feat equates to dumping and placing approximately 250 driveways in one day!

First, a little about the project that provided this opportunity. Runway 1L-19R is the largest of the three runways at KCI. Due to the size and timeline of this job, the runway reconstruction was separated into two phases. Phase one, reconstruction of the north end of KCI Runway 1L-19R, was completed by our crew in 2021. This past year, we completed phase two by reconstructing the south end of the runway. Crews removed and replaced approximately 100,000 square yards of subgrade, base rock and concrete equating to 20 acres of pavement.

The crew was aware this project was accelerated and that it was expected to be paved within a few weeks. They also knew that with their concrete plant located just a few thousand feet from the runway, they had a chance to finish the paving in significantly

less time. Even with this advantage, everything else had to go smoothly in order to meet this goal. There could be no delays, no mechanical issues with the plant or paving equipment, no delays of the materials or trucks to haul the materials. Any hiccups whatsoever and the attempt would fail. This would be an extremely tough endeavor.

So, Kendall and his team got together, talked it over and went all-in. If it was possible, they were up for it! They looked at the weather forecast and planned to make the attempt on September 1. That day the team arrived early at 4:00 AM and worked until they achieved the goal. It was a team effort with the plant crew producing and placing 5,020 cubic yards of concrete mix. The truckers hauled 502 truckloads or approximately 10,000 tons of materials. It was a long day, but they made it happen, commenting they would do it again if needed. "It was a pretty cool day. Lots of camaraderie amongst this group. They spend a lot of time together and bonded like family. I'm so proud of this team and what we have achieved," Kendall stated.

The KCI runway project was six weeks late getting started due to FAA delays, but this hard-working crew was able to get the project back on track and completed ahead of schedule.

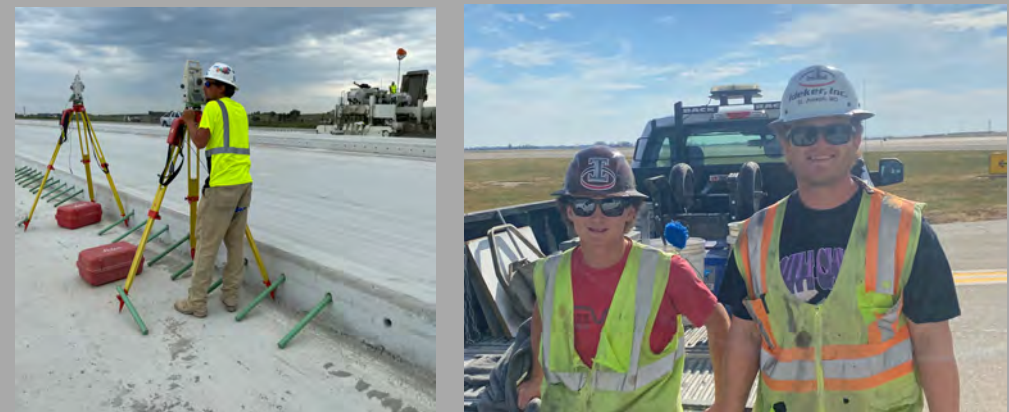
The crew will never forget that day, but a few will be reminded of it daily by the tattoos they got in honor of the achievement. A handful of the crew made a pact to get a tattoo and made good on their word.



Left: 3D Tech, Justin Booth, triangulates using the Leica TS16, keeping the paving train moving.

Center: Kaden Anderson and Nick Stephenson, members of the QC team, ensure all concrete product meets the required specifications.

Right: Terry Fiegenger, Rocky Cain, and Conner McCartney work tirelessly to provide the paving team with the materials they need.



Employee Spotlights



Mike Wilson
Project Superintendent

Years with Ideker: 29 years
City of Residence: Platte City, MO
Spouse: Amy
Kids: Makenna (17) and Kylee (15)
Favorite motto: "Work Hard, Play Hard"
Favorite movie: Talladega Nights
Favorite band: AC/DC
Hobbies/Interests: Powerboating, old muscle cars and anything with horsepower.
Work experience/background: Played football for 2 years at small college in Tarkio, Mo then transferred to MWSC in St. Joseph, Mo. Have worked at Walnut-Woods, YMCA, Rickle Grain, Wells and Schindler Construction and Ideker, 3 years on saw crew, 4 years base crew and 22 years superintendent.
Accomplishment I am most proud of: My great family and two beautiful daughters.
Something interesting people may not know about me: I started working for Ideker in 1994 before I was actually hired. I drove to the job site got out to talk to someone about a job and everyone was busy paving so I jumped in with the saw crew.



CiJay Smith
Office Coordinator

Years with Ideker: Started in January 2022
City of Residence: St. Joseph, MO
Motto: "A smile is the best thing you can wear"
Favorite movie: American Sniper & The Equalizer 2
Favorite band: I enjoy listening to anything country...Morgan Wallen & SixFourty1.
Hobbies/Interests: Fitness, golfing, spending time outdoors hiking or walking, baking, traveling with family.
Work experience/background: I worked in the aesthetic industry for 8 years prior.
Accomplishment I am most proud of: Becoming the healthiest and best version of myself every day.



Chad Heitman
Director of Mining Operations

Years with Ideker: Started in September 2022
City of Residence: Kearney, MO
Spouse: Jaci (Jaclyn)
Kids: Peyton (19), Logan (14), Owen (9)
Motto: "I am the man of her Pinterest dreams"
Favorite movie: Tombstone
Favorite band: Eddie Money
Hobbies/Interests: Spending time at the lake and Garden Tractor Pulling with the boys.
Work experience/background: Began my underground mining career in 1998 in the Doe Run lead mines in Southeast Missouri. I worked in the Platinum mines in Montana for a while and returned back to the Doe Run lead mines. In 2007, I came to KC to work for Lafarge. At this position, I ran two underground aggregate mines (Talon) and the vertical shaft cement mine (Central Plains Cement).
Something interesting people may not know about me: I get conned into building all kinds of crafty things my wife finds on Pinterest.

In Memory of

We mourn the loss of two of our own. This past October, two employees were tragically killed in traffic accidents on the I-49 project.

Jonathon Wilson, a key member of the Quality Control team and **Douglas Bentley**, a loyal union employee, will always be remembered and forever missed by their Ideker colleagues they worked so closely with for many years. We keep their families, friends, and co-workers in our thoughts and prayers as we all continue to heal from these tragic losses.

Welcome **new** Ideker employees!

Kaden Anderson - Quality Control
Bo Cheek - Asphalt Superintendent
Chad Heitman - Director of Mining Operations
Ben Sheehan - Asphalt Superintendent
Gabe Vandiver - Safety Director

Meet our new Safety Director!

We are excited to welcome **Gabe Vandiver** to our team! Gabe earned his degree in Safety Management from the University of Central Missouri and has 6+ years of safety related experience as a safety manager and superintendent for area railroad and construction companies. He brings a proven record of collaborating cross-functionally to assess, implement, and improve safety procedures. Gabe has a passion for creating a best-in-class safety culture and for ensuring all return home safe.

Hometown: Richmond, MO
City of Residence: Kansas City, MO
Hobbies/Interests: My family owns and operates a cattle farm in Ray County so I try to get back there and help when I can. I'm a big Chiefs' fan and love being at Arrowhead Stadium on Sundays. Go Chiefs! I also enjoy playing golf and snow skiing.



Mining Engineer Brought Onboard

Chad Heitman is one of the newest members of the Ideker team. He comes to us with a high level of education, experience, and technical ability in the areas of Geology and Mining Engineering. Chad earned his Master of Mining Engineering from University of Missouri-Rolla and has a bachelor's degree in Geology from Northwest Missouri State University. During his career he has developed and managed mining sites as well as established successful mining safety programs in the Kansas City area for over 20 years. Chad will be a great asset to our leadership team providing insight and recommendations related to rock quarrying and underground mining.

New Century AirCenter project to wrap up this spring

The New Century AirCenter located in Gardner, Kansas is a joint civil-military airport known for the U.S. Army 88th Reserve fleet of Chinook helicopters based there. The Army Corp of Engineers awarded Ideker the project in 2021 to reconstruct the military side of the aircraft parking and tarmac area. The two-phase project required replacement of 44,000 square yards of concrete pavement along with placing layers of aggregate base, aggregate drainage and lime treated subgrade. The size of the project equates to paving approximately six football fields and included installing new airfield lighting, aircraft tie-downs, fencing, and gate operator controls.



Military Corps projects are often more challenging given the stringent specifications required. The Corp projects call for considerably more testing and reporting than that of State work or even the FAA. Our experienced Quality Control staff was prepared and have had no issues meeting the requirements. However, the crew was surprised to encounter a few other obstacles after removing the existing pavement and base rock. Numerous unmarked underground utilities were discovered in which many were difficult to determine if they were live or abandoned. Work was delayed for several months until the utilities were deemed safe to either remove or relocate. An old underground fuel system was also discovered and required removal before the team could continue. Crews were then able to install new drainage inlets and a new storm sewer system.

Phase one, which was the larger phase of the project, opened back up to the military helicopter parking in November 2022. It consisted of approximately 65% of the parking area. The second phase, which includes removal and replacement of the other side of the tarmac, is underway and scheduled for completion by early summer 2023.



The milling crew removes the old layers of pavement.

The pipe crew prepares the subgrade for a large manhole box weighing nearly 48,000 pounds.



Lights had to be utilized on long days of mainline paving. Paving at night was necessary in order to maximize plant production and to avoid headers.

Connect with us:   

KCI Overhaul Base Rehabilitation Phase II

This large asphalt resurfacing project required removal and replacement of the asphalt pavement around the Overhaul Base at KCI. Crews placed 5 inches of asphalt in two lifts using the echelon/side by side paving method in only 3 days. This project also included placing 8 inch shoulders and correcting an area that had been flooding.

The main challenge of this project was providing an even asphalt mix distribution between the two paving crews to limit the number of joints and maintain consistent and positive drainage across the large, flat area. Ideker teams worked together using the latest technologies including GPS survey equipment, equipment tracking, and live plant production software to achieve success. They accomplished this all while allowing airplanes to be towed on and off the site for repairs as the base did not shut down during construction.



Over 33,000 square yards of asphalt (8,700 tons) was placed to construct the area around the airplane maintenance facility at KCI. The project was awarded the 2nd place MAPA quality paving award for Airports.

Route 152 Platte County, MO

Asphalt Resurfacing

This project consisted of complete removal and replacement of 152 Highway from 435 on the west to I-29 on the east, approximately 5.25 miles of roadway. Crews removed and replaced two inches of asphalt on the main roadway, and placed 2.5 inches placed on all ramps. An area wide shortage of trucks to haul materials to the project slowed crews down, however they worked hard and steady to deliver a quality product on time and under budget.



Interstate 635 Platte County, MO

Asphalt Resurfacing

Night time work was required on this asphalt reconstruction project located on I-635 between I-29 and the Missouri River (Kansas). Approximately 3 miles of roadway and 16 ramps were milled and replaced with 3/4 inch to 3 inch asphalt depending on the underlying asphalt stripping.

Crews were also challenged with working around a bridge project on I-29 in which required the north end of the project to be completed on weekends with short notice.



New KCI Asphalt Plant Opening Spring 2023



The Gencor asphalt plant located at 9700 North Amity Avenue just south of KCI will be referred to as the KCI Plant location.

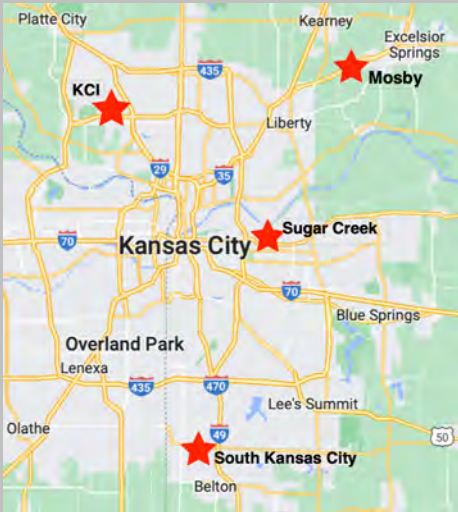
Ideker continued to expand and change the asphalt plant location in 2022 to better service the Kansas City community and our own internal projects. We will soon operate four separate plants in the Kansas City area.

Construction of the newest asphalt plant is underway and planned for operation by April 2023. Located just south of KCI airport off North Amity Avenue and 152 Highway, the land was purchased after market analysis determined a high demand for asphalt products in the north Kansas City area. The new location features a Gencor asphalt plant with the largest capacity and most advanced technology on the market. The plant can produce an impressive 600 tons of mix per hour. The unique plant also allows more RAP to be added to the mix, along with other technologies that ensure a high-quality mix for our customers. The **KCI Plant** will

service Ideker projects and commercial customers in Platte City, Parkville, and North Kansas City areas.

This year the **South Plant** was relocated one mile south to its new permanent property just south of 150 Highway and Botts Road in Kansas City, Missouri. This location will continue to cover projects in the southern portion of the city.

The **Mosby Plant** remains to service those on the northeast side of the city while the **portable asphalt plant** in Sugar Creek, Missouri will service crews and customers in Independence and central Kansas City areas. As the asphalt paving industry grows, the company is set up for success as these four locations will meet the future demand.



Locations of the Ideker asphalt plants span the Greater Kansas City area.



Letter From The President

This past year the Ideker, Incorporated family experienced the unthinkable and had 2 fatalities in 3 weeks on our I-49 resurfacing project. Before this last summer, Ideker has had only one fatality in our 70 plus year history. I have always taken pride in our safety record but this year’s events made me realize more so than ever that things can change in an instant. I know we all understand that road construction is an inherently dangerous profession and we can get complacent, but we always must keep safety as the number one priority. I want everyone to know that I am fully committed to doing everything I can to increase safety and reduce the probability of accidents. We are currently working with the DOT’s and municipalities to make changes in current specifications to make road construction workers safer. We will continue to research and implement new technology that will help decrease the risk of accidents. The 2023 construction season will also start with some major changes to Ideker’s Safety Program. Jordan Ideker and Gabe Vandiver will be

heading up the Safety Management Program. Jordan will be handling the administrative portion of the job, providing more time for Gabe to be out on the projects. Gabe will be devoting more of his time to educating our team and ensuring we adhere to our safety standards. My personal benchmark will continue to be measured with the question, “Would I have my son or daughter do this?” My promise to everyone on the Ideker team is that we will continue to provide the safest work environment possible. These tragedies will not be forgotten and although we cannot reverse the fate of those horrific nights, we can and will make a difference going forward. My heart goes out to the families of Jonathan Wilson and Douglas Bentley, whose lives were cut short while in the line of duty. I pray that the lives they touched and the legacy they leave behind will never be forgotten, and that we may take whatever solace we can knowing they will have an impact on the future safety of the construction industry. BE SAFE and God Bless.

Crews continue work at KCI’s new terminal in 2023

Both our asphalt and concrete teams were busy this past year prepping and paving areas around the new KCI terminal. A good amount of the final concrete work around the terminal was paving the areas where the large pavers were unable to reach. Our asphalt crew constructed and paved a main public parking lot adjacent to the terminal. Since beginning the project in September 2021, we have paved over **400,000 square yards** of concrete for the new terminal which equates to over **80 acres**.

Once the new terminal is operational, our crews will return to remove and replace the pavement around the old southwest terminal which will be used for aircraft parking, completing the remaining 15% of the project.



Junior Brown’s crew paves the parking lot in front of the new KCI terminal.

AWARDS & RECOGNITION

2022 PAVING AWARDS

We received **TWO NATIONAL ACPA Awards** this year for **Excellence in Concrete Paving!**

Gold Award - Gould Peterson Airport Runway 18-36 (Tarkio, MO)

Silver Award - KCI Runway 1L-19R (Phase 1) - Commercial Service & Military Airports Category

MO/KAN CONCRETE PAVING AWARD
1st Place - KCI Runway 1L-19R (Phase 2) - Commercial Service & Military Airports Category

MISSOURI ASPHALT PAVING AWARDS

1st place (Longevity - over 10 years old and remains in good condition) - Route 7 Blue Springs, MO

2nd Place (Airports) - KCI Overhaul Base Apron Rehabilitation



Runway 18-36 at Gould Peterson



David Wilkins



Kasie Gebbie

Congratulations to **David Wilkins** earning the annual company **MVP** award and **Kasie Gebbie** earning the **Heart of a Champion** award!!



Kevin Hardee (pictured on the right) receives the MAPA Longevity award for quality paving on Route 7.



Mark Allegri (pictured on the left) receives the MAPA award for the KCI Overhaul Base Rehabilitation project.

Ideker lands runway job at Rosecrans

The **\$25 million** runway reconstruction project at Rosecrans Memorial Airport in St. Joseph will begin this spring. The job consists of complete removal and replacement of the main north-south runway 17-35. This large and accelerated project is required to be completed within 180 days. Crews are familiar with Rosecrans, completing multiple projects there over the past **20 years**. The most recent project was in 2017 when crews reconstructed the pavement and drainage system in and around three T-Hanger buildings. Ideker also rebuilt Taxiway Alpha in 2009 and the Assault Strip Runway 13-31 in 2016.