

Completed Projects

Rt. 291 Clay County
Rehab Ottawa Phase 2
Rt 45 & I-29 (Subcontractor)
Tarkio Runway Reconstruction
Rehabilitate Taxiway C
Rt. 69 Clay-Platte County
Rt. 9 (635 to FF) Platte County
US Route 50 Jackson County
KCI Runway 1L-19R
Rt. 92 & 45 Platte County
Rt. 58 & 291 (Subcontractor)
US 169 Johnson County
Loves Truck Stop - Bates City
Rt 435 Johnson County
Rehab Taxiway A - Wheeler
Rt. 7 Cass County

Current Projects

KCI New Terminal 7A Concrete
KCI New Terminal 7D Earthwork &
Parking Lots
KCI Runway 1L-19R
River Bluff Bike Trail - St. Joseph
New Century Air Center Tarmac
Rt 92 Clay County
North Brighton 58th to Pleasant
KC Streets North
KC Streets South
Loves Truck Stop Cameron, MO

Recently Awarded Contracts

Route 152 Platte County
Route 635 Platte County
Route I-49 Cass County
Route 435 Platte County
Route 69 Clay County



INK
Tenth Edition, Winter 2022

www.ideker.net

HISTORY *in the Making*

Ideker, Inc.
4614 South 40th St.
St. Joseph, MO 64503



Ideker paves iconic KCI Airport Project

Construction around the new single terminal has begun!

In our 70+ year history our crews have built major interstates, such as I-29. We have reconstructed ramp systems, interchanges, and bridges. We have demolished and rebuilt major airport runways and have been a part of major improvements in the Kansas City area, such as the KC Streetcar project. All very impressive and something to be proud of...but nothing quite as **noteworthy and historic** as being part of the team that is constructing the largest infrastructure project in Kansas City’s history.

Ideker is honored to be working amongst the 5,000+ workers and 229 local partners involved in the modernization of the Kansas City International Airport. And most, if not all, of our employees are participating in some way.

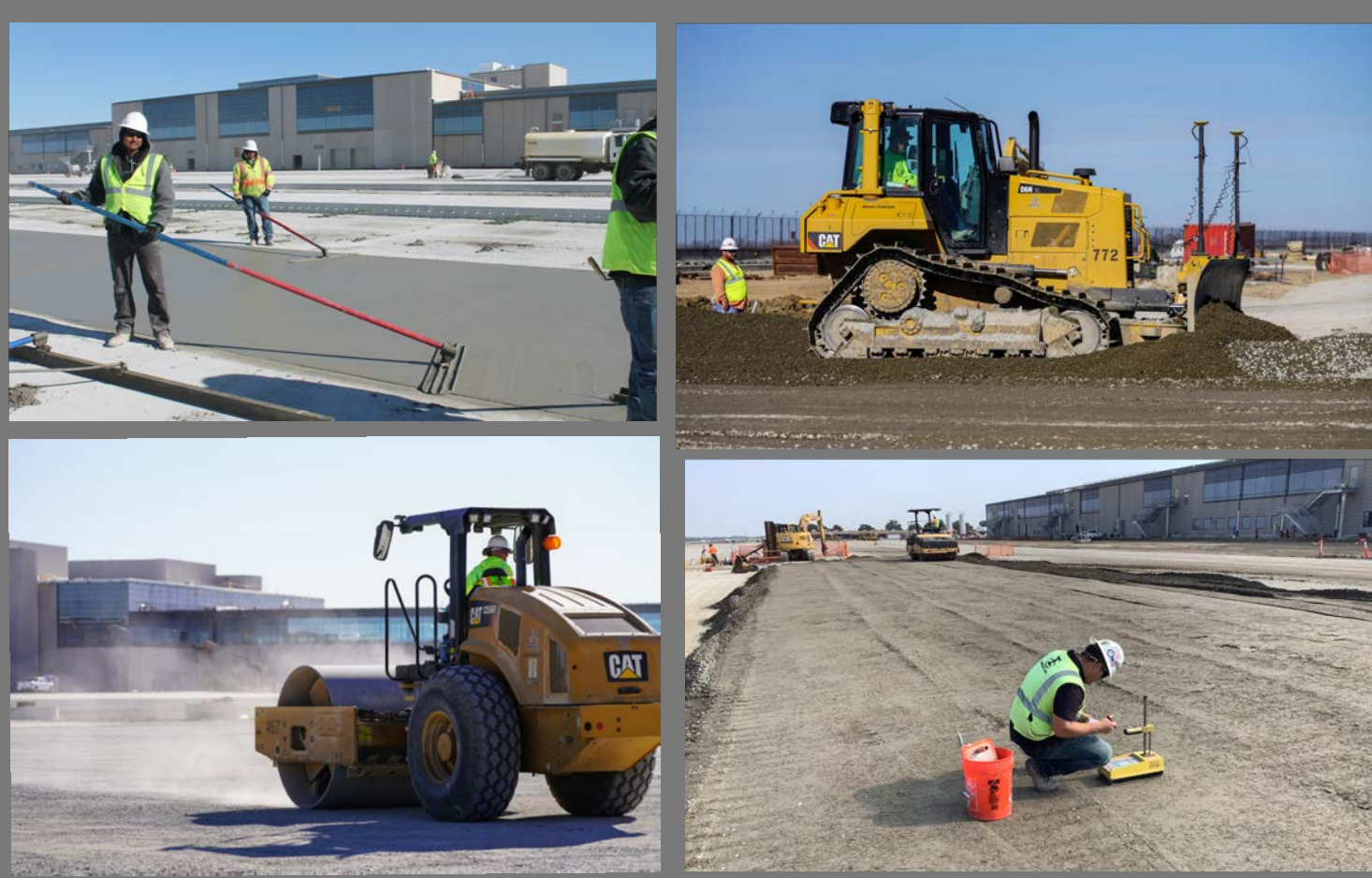
Ideker was awarded the **\$72 million concrete paving project** back in September of 2020. The project consists of placing concrete around the new terminal including aircraft parking aprons, taxiways, and aircraft parking areas covering over 100 acres with a total depth of nearly four feet (including the subgrade and base

layers). Our team began work in the spring of 2021. The first few months were spent grading and leveling the area and then crews installed the cement treated subgrade and aggregate base layer. In June, paving commenced and **approximately 25% of the concrete pavement has been installed to date**. The asphalt team has also completed one of the three parking lots just east of the new terminal.

Vice President Cody Phillips has been dedicated to the project this year. “Typically, when we work at the airport, we are the prime contractor and we do much of the work ourselves, so we have control over the project. With this one, we are one of many subcontractors. There are a lot of people involved, **a lot of people to coordinate with** and to report to.” Phillips stated.

Superintendent Danny Holyfield is proud to be part of the team working at KCI. “My very first job with Ideker was on a small project in Leavenworth over 32 years ago and now to be part of such a high-profile project is incredible. The **company has done nothing but grow** and I’m honored to be a part of it,” Holyfield stated.

Ideker crews will continue working at the KCI new terminal through 2022 with the new airport **opening to the public by the spring of 2023**. Leadership on the project includes Cody Philips, Danny Holyfield, Brandon Kendall, Steven Sellars and Kevin Johnson.



Employee Spotlights



Kimberly Kay
Payroll Coordinator

Years with Ideker: Started in June 2021
City of Residence: St. Joseph, MO
Spouse: Brett
Kids: Asher (17 months)
Favorite motto: “A ship is safe in the harbor, but that is not what ships are made for”
Favorite movie: Finding Nemo
Favorite band: The Eagles (Thanks, Dad)
Hobbies/Interests: Horseback riding, traveling, and corralling our son, dog, and two cats!
Work experience/background: Mostly retail/ DSD in sales/management/human resources
Something people may not know about me: In college, my crew canoed 116 miles through Florida’s 10,000 islands area and up the Gulf of Mexico, on a 10-day excursion.



Peggy Kendzora
Accounts Receivable/Subcontractor Accounts Payable

Years with Ideker: Started in July 2021
City of Residence: St. Joseph, MO
Spouse: Andrew
Kids: Madison (18), and Avani (13)
Favorite motto: “Time is free, but it’s priceless. You can’t own it, but you can use it. You can’t keep it, but you can spend it. Once you’ve lost it, you can never get it back.”
Favorite movie: I’m not a big movie person, but my all time favorite is The Notebook.
Favorite band: I like anything country. My favorite right now is Morgan Wallen.
Hobbies/Interests: I love anything summer! Boating, swimming, camping, and gardening
Work experience/background: My entire work experience is accounting for a car dealership. We also own a HVAC business that I am the bookkeeper for.
Something people may not know about me: I am a dog breeder of mini and standard Golden-doodles, so we always have a house full of puppies!



Tommy Stackhouse
Trucking Manager

Years with Ideker: Started in November 2021
City of Residence: Smithville, MO
Spouse: Brittany
Kids: Landen (15), Addisen (13), and Penelope (4)
Favorite motto: “Do it right the first time”
Favorite movie: I can’t pick a favorite... too many good ones
Favorite band: Dan Finnerty and the Dan band
Hobbies/Interests: Enjoying family time. I also enjoy guns and cars.
Work experience/background: I have been in the trucking industry since 2005. Management since 2007. For the past 8 years, I have ran a heavy haul business.
Accomplishment I am most proud of: I am most proud of my children.

Congratulations and best wishes to our **2021 retirees!**
We thank you for your service and loyalty!

- Rickey Roup** 41+ years of service
- John Pulley** 25+ years of service
- Don McCamy** 9+ years of service

Congratulations to **Paul Ideker** elected as **2022 President** of Heavy Constructors Association of Greater Kansas City!

Welcome **new** Ideker employees!

- Kimberly Kay** - Payroll Coordinator
- Peggy Kendzora** - Accts Rec/Subcontractor Accts Payable
- Tommy Stackhouse** - Trucking Manager
- CiJay Smith** - Receptionist
- Ryan Milliken** - Shop
- Travis Hulsey** - Asphalt Quality Control

In Memory of

Luis Cervantes-Magana

Luis Cervantes-Magana was tragically killed in a car accident on November 1, 2021. He was a loyal member of the concrete paving crew. Luis was funny, caring, ambitious, hard working and a valued employee. The concrete team attended Luis’s Celebration of Life in Emporia, Kansas where they were amazed by the outpouring of love and hospitality by his wonderful family and friends. **Se le extraña mucho!** Rest in peace, our friend.



Richard “Butch” Riddell

Butch Riddell passed away on January 29, 2022 from COVID complications. He was a respected leader who has been described as kind but firm, extremely knowledgeable, a great asset to the company and friend to many. He will be greatly missed!



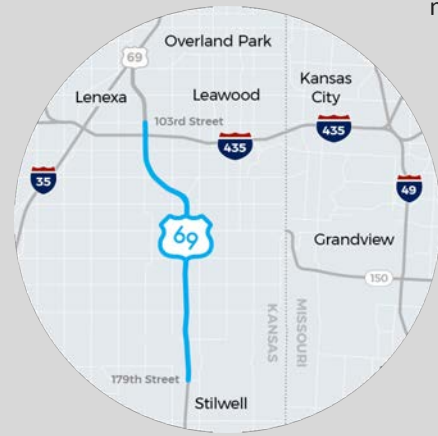
Missouri River Flood Case Update

Ideker Farms flood case (Ideker Farms, et al. vs USA) is now sitting in the United States Federal Circuit Court of Claims in Washington D.C. on appeal. After Ideker received a positive liability ruling from the court saying that the government thru its actions caused flooding in years 2007, 2008, 2010, 2014 and subsequently awarded damages, the government and Ideker have appealed. Ideker is asking the appeals court to reinstate the damages of 2011 and additional damages. The government is asking the court to reconsider the liability ruling. We expect a verdict on the appeal in the late Fall of 2022.

Ideker shortlisted for massive KDOT Design-Build

US-69 Modernization & Expansion project estimated at \$400 million

Last fall, the Kansas Department of Transportation announced their Request for Qualifications seeking Design-Build teams to deliver Kansas' first ever Express Toll Lane project. Ideker teamed up with Kansas City based Clarkson Construction and HDR Engineering, Inc. and formally responded to the RFQ. The Ideker & Clarkson team known as the "69Express Constructors" were one of only three design-build teams chosen based on qualifications. The qualifications were evaluated based on organizational structure, key personnel assigned to the project, experience of the firms on similar projects, and past performance.



Based on the significant size and complexity of the project, KDOT chose the Design-Build delivery method. Design-builds aim to deliver complex, large-scale construction projects by maximizing expertise and creating a single point of responsibility for final design and construction. Combining design and construction on large projects can create opportunities for a Design-Build Team to propose creative ideas for better meeting a project's goals.

The high-level scope of the project includes:

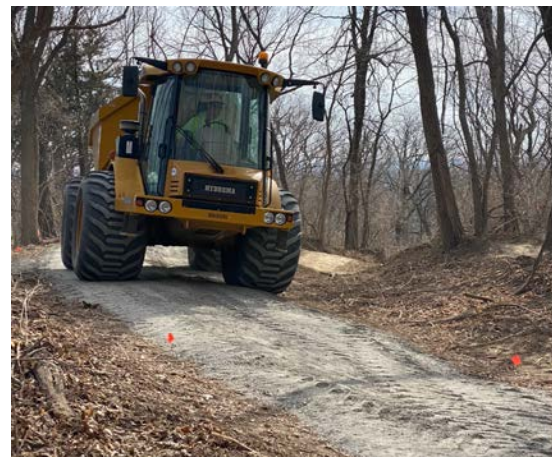
- Implementation of an express toll lane in each direction of US-69 from 103rd Street to 151st Street
- Reconstruction of US-69 from 103rd Street to 179th Street
- Implementation of the US-69 northbound extended ramp system to I-435

KDOT anticipates the final Design-build team will be selected by July 2022. Construction is slated to begin fall of 2022 and completed no later than summer of 2026.

Crews begin work on River Bluff Trails Park

Ideker has partnered with Nomad Trail Development to build an extensive walking and mountain biking trail system near the Missouri river. Ideker was awarded the \$1.5M design-build project by the City of St. Joseph in 2020 and serves as the general contractor. This past spring, Ideker crews cleared and mulched an eight foot wide aggregate trail nicknamed the "limestone spine" through the middle of the bluff. This mile and a half path can be used for walkers as well as for emergency vehicles to get up the bluff, if needed.

Nomad Trail Development is currently building the offshoot mountain bike trails to be completed by summer of 2022. The trail system is expected to draw biking enthusiasts to the area because of the natural topography of the limestone bluff for berms and jumps. While most of the trails will be for beginners and intermediate riders, there are also more advanced features, such as steel ramps and stone structures that will be included in the park. Ideker is excited to provide the residents of St. Joseph with a park of this nature as well as attract tourists to the area.



TARKIO AIRPORT PROJECT Reconstruction of Runway 18/36

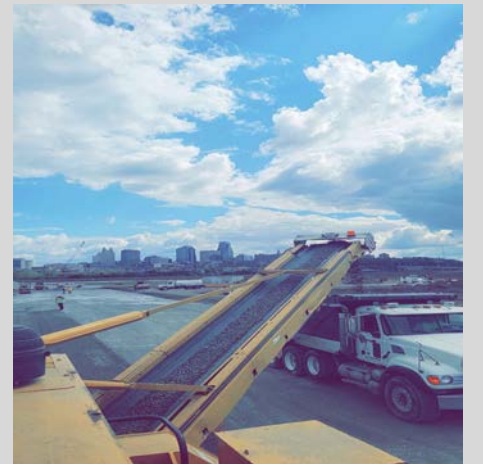
A large amount of grading was required for this project to shift the runway to the south and elevate it. The runway was located in a flood plain and needed to be raised 3 feet at the north end and 6 feet at the south end. Because a higher elevation was needed, crews were able to crack the existing runway, leave it in place, and fill in the gaps with soil, providing a stabilized layer to build on. Approximately 130,000 cubic yards of dirt was brought in to raise the runway. The project was completed on-time.



Over 36,000 square yards of concrete was placed to construct the runway. The paving consisted of four separate lanes 18 feet wide.

WHEELER DOWNTOWN AIRPORT Rehabilitation of Taxiway C

This project consisted of complete removal and replacement of the 5,000 square yard taxiway. Crews removed and replaced three concrete inlets as well as 700 linear feet of concrete pipe. The pavement replacement consisted of 6 inches of cement treated subgrade, 6 inches of asphalt treated base and 14 inches of concrete pavement. The project was highly accelerated requiring completion within 45 calendar days. Ideker finished the job ahead of schedule in 42 calendar days.



The asphalt paving crew led by Jr. Brown.

KANSAS CITY MISSOURI CITY STREETS (NORTH & SOUTH) Asphalt Resurfacing

It was all hands on deck for these two large volume mill and fill asphalt projects. The Kansas City streets north of the river consisted of approximately 300 city streets. The project on the south side of Kansas City consists of around 155 streets to be milled and resurfaced. The two projects combined require over 200,000 tons of asphalt. Two crews worked the north city streets and one crew worked on the south side this past year to get nearly 100,000 tons of asphalt placed. All milling and paving crews will continue work on the two projects this spring.



The crew led by Ryan Higginbotham places an asphalt overlay in a neighborhood north of the river near 291 Highway.

St. Joe Office Gets Major Renovation

The Ideker headquarter building in St. Joseph went under construction in 2021 receiving an expansion of office space and an updated modernized look. The entire office staff moved into temporary offices for six months while construction was underway. Highlights of the renovation include:

- 2,400 square feet additional office space
- An additional larger conference room
- An expanded and updated lobby and breakroom
- New carpet, paint and lighting throughout
- New shop breakroom/restroom
- Up-to-date technologies

The additional space and updated look further enhance the team’s daily work experience and accommodates the addition of new team members. "The renovation gives us a fresh, up to date look that our employees can be proud of," said Paul Ideker, President. "This is a testament to the growth and success our company has experienced and marks the beginning of a new chapter in our long history”.



Connect with us:   

2021 PAVING AWARDS

ACPA NATIONAL AWARD FOR EXCELLENCE IN CONCRETE PAVING

Silver Award - Runway 14-32 Reconstruction (Chillicothe)

MO/KAN CONCRETE PAVING AWARDS

1st place - KCI Runway 1L-19R (Phase 1) - Commercial Service & Military Airports Category

1st place - Gould Peterson Airport Runway 18-36 (Tarkio) Reliever & General Aviation Airports Category

MISSOURI ASPHALT PAVING AWARD

2nd Place - Route 9 Platte County Primary Route (Less than 50,000 tons)



Asphalt crews reconstructed the shoulders and added a turn lane prior to the the mill and fill overlay of Route 9 highway. Due to heavy daytime traffic, all work had to be completed at night.

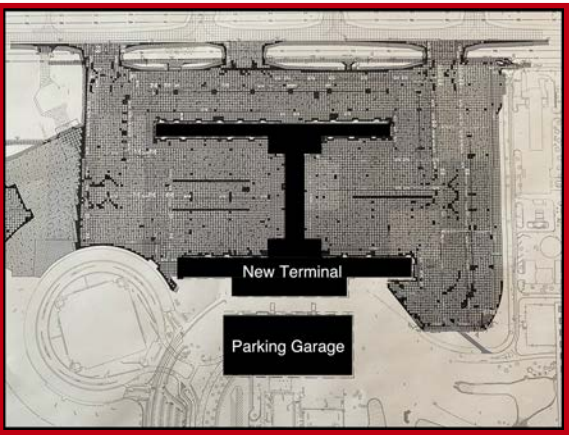
South Asphalt Plant Relocation

By David Wilkins, Asphalt Plant Manager

In the Winter of 2021, Ideker was approached about selling the South Plant property. A developer had bought the property around the South Plant and needed one more piece to complete the puzzle. What started as a farfetched idea, eventually turned into reality. One condition of the sale was the buyer of the property had to find another location for us to move our asphalt plant operations. After some searching, the buyer found a property located a half mile south of the existing South plant at the cross streets of Botts Road and Andrews Road.

Since the plant had to be relocated, it raised the question, “Do we move the current South Plant to the new site?” Over the course of the last few years, the South Plant has played a key role in municipal overlays supplying mix to our own crews during the day. At the same time, the commercial market has ticked up, making the South Plant a little small for the current market demand. It is a good problem to have, but a problem none the less. With that mindset, we evaluated several potential solutions, but ultimately landed on moving the Dillman Plant to the new South Plant location.

What’s to come of the “old” South Plant you ask? Great question. The current South Plant will get relocated to Sugar Creek. At this location, the plant will be able to take pressure off of either Mosby or the South plant as the need arises. Ultimately, the plant swap should allow us to provide better service to both our crews and customers. We are looking forward to moving onto the new property Spring 2022.



Above: The dark gray portion represents the 100+ acres of pavement that will be placed around the airport terminal as part of the Airside Paving Project.

Below: The new restored Runway 1L-19R



Crews complete reconstruction of KCI Runway 1L-19R (Phase 1)

The original Runway 1L-19R built back in 1958 had been rehabilitated several times over the years by adding layers of new concrete but never removing the old. This left the existing runway over 42 inches thick. Crews completely removed all the existing runway and reconstructed it using a lime treated subgrade, aggregate base, Econocrete and topping off with 17 inches of concrete. A new runway electrical system for lighting was installed as well as some drainage piping. The asphalt team milled and paved the shoulders of the runway. Even with a delayed start, this project was completed two weeks ahead of schedule! This year, Ideker crews will complete Phase 2, the reconstruction of the south end of the runway.



Thank you to Paving Superintendent Brandon Kendall for providing some great pictures!